

# State Schools Improvement Strategy 2022–2026

## Every student succeeding

### Vision

Empowering lifelong learners through a student-centred approach.

### Purpose

The State Schools Improvement Strategy informs our policies, decisions and actions.

### Priorities

- Success and wellbeing for all children and students as they transition through each stage of learning in an inclusive and equitable education system.
- Continuous improvement in the access to, and teaching, learning and assessment of, the Queensland Kindergarten Learning Guideline, the Australian Curriculum and the senior syllabuses.

### Principles



**Alignment** — our shared understanding of the Queensland Kindergarten Learning Guideline, the Australian Curriculum, the senior syllabuses and the policies that govern our work and the strategic use of resources.



**Precision** — how we use evidence to identify the 'right work' and do the 'work right' by building capability, planning, implementing, monitoring and reviewing.

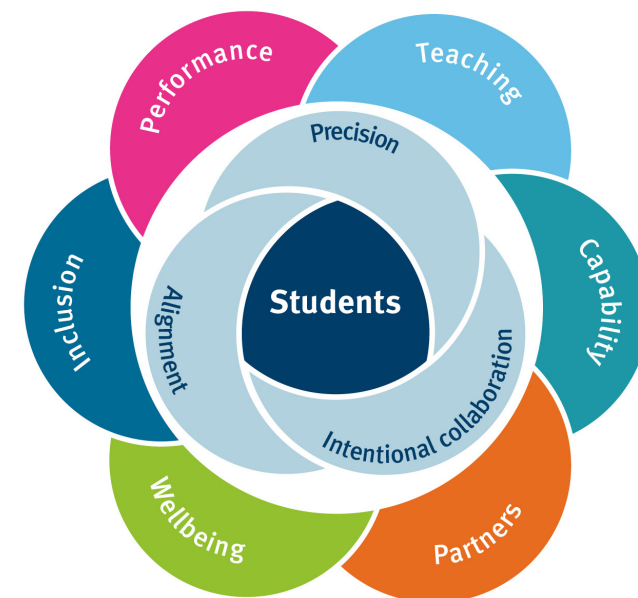


**Intentional collaboration** — the deliberate actions we take to work together, learn together and improve together.

### Improvement measures

- Achievement
- Engagement
- Wellbeing
- Transitions

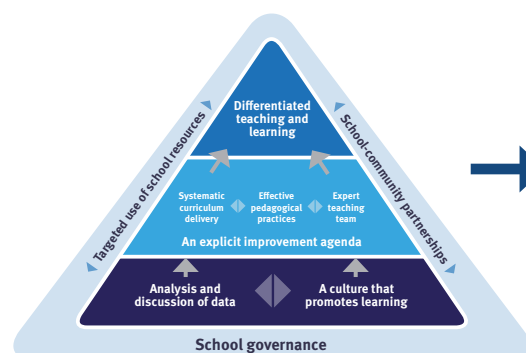
### Improvement focus



## School Improvement Model

### School Improvement Hierarchy

Where we are



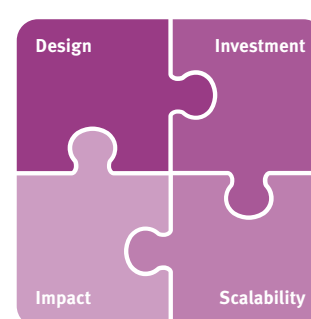
### Inquiry Cycle

How we learn



### Standards of Evidence

What impact we have



### Guiding questions

1. How are all students engaged and improving in their learning?
2. How do we know and monitor our impact?
3. What can we do better?
4. How are we sharing our learning?

State Schools are governed by the [Education \(General Provisions\) Act 2006](#), and Regulation 2017, the [Disability Discrimination Act 1992](#), the [Financial Accountability Act 2009](#), [Financial and Performance Management Standard 2019](#), [Public Sector Ethics Act 1994](#) and the [Human Rights Act 2019](#) and [The Alice Springs \(Mparntwe\) Education Declaration 2019](#). Whole of government Standards and Directives and the department's policies and procedures set clear expectations and accountabilities and document how we deliver and monitor our services.

Queensland state schools commit to providing opportunities for every Aboriginal and Torres Strait Islander child and student to achieve success by working with First Nations people to co-design culturally appropriate whole of school strategies.



**Queensland  
Government**

# State Schools Improvement Strategy 2022–2026

## Every student succeeding

### Informing our planning and practices

#### Performance

##### We are governed by:

- The School performance policy and procedure

##### We are guided by:

- Data Literacy Framework
- School reviews
- National Quality Framework
- Enterprise Risk Management Framework

##### We are supported by:

- Standards of Evidence
- School performance planning website
- Intentional Collaboration website
- School review resources
- School reviews research and reports
- Investing for Success
- National Quality Standard

#### Inclusion

##### We are governed by:

- *Human Rights Act 2019*
- *Multicultural Recognition Act 2016*
- Disability Standards for Education
- Inclusive education policy

##### We are guided by:

- Every student with disability succeeding
- Every Aboriginal and Torres Strait Islander student succeeding

##### We are supported by:

- Inclusive education resources
- Cultural and linguistic diversity
- Every student with a disability succeeding resources
- Students with diverse needs resources
- Indigenous education resources
- Youth engagement resources
- Culturally-responsive pedagogies
- Early Years Connect
- Support for rural and remote schools and students

#### Wellbeing

##### We are governed by:

- Student Learning and Wellbeing policies and procedures
- Supporting students' mental health and wellbeing procedure
- Student discipline procedure

##### We are guided by:

- Student Learning and Wellbeing Framework
- Staff Wellbeing Framework
- Youth Engagement Strategy
- Principal Health & Wellbeing Strategy

##### We are supported by:

- Student health, safety and wellbeing resources
- Supporting student behaviour resources
- Transition to school
- Centres for Learning and Wellbeing
- Respectful relationships education
- Australian Early Development Census

#### Teaching

##### We are governed by:

- P–12 curriculum, assessment and reporting framework

##### We are guided by:

- Queensland Kindergarten Learning Guideline
- Early Years Learning Framework
- QCE and QCIA attainment
- The Australian Curriculum
- Department of Education International Strategic Plan
- Schools of the future: A strategy for STEM in Queensland state schools

##### We are supported by:

- Early Start
- P–10 Literacy continuum
- Literacy P–12 Hub
- Draft P–12 Numeracy continuum
- Numeracy P–12 Hub
- Assessment & Moderation Hub
- C2C materials
- Reading and Writing Centre
- Dandiiri Schools & Community Library
- Age-appropriate pedagogies
- Foundations for Success
- Global opportunities
- Global schools through Languages Hub
- STEM hub for Schools

#### Capability

##### We are governed by:

- Employee performance and development policy

##### We are guided by:

- Australian Professional Standard for Principals
- Australian Professional Standards for Teachers
- Ways of Working: Assistant Regional Directors and Lead Principals
- Annual performance review process
- Advancing rural and remote education in Queensland state schools
- Leadership strategy
- Cultural capability for leaders

##### We are supported by:

- Induction resources
- School reviews training
- Autism Hub
- Reading and Writing Centre
- Centres for Learning and Wellbeing
- Take the Lead
- Principal Induction
- Teacher Learning Centres
- Data-informed practice
- K–2 Enhancing Continuity and Alignment Hub
- Principal Engagement Strategy

#### Partners

##### We are guided by:

- Parent and Community Engagement Framework
- School community and partnerships policies and procedures

##### We are supported by:

- Partners in Learning program
- Every Student with Disability Succeeding Parent & Community Engagement Factsheet
- Safe & respectful school communities
- Early Years Transition decision making tool

